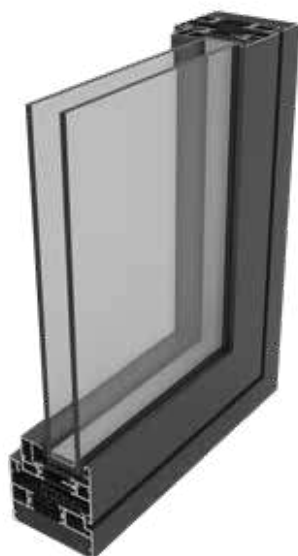


58BW ST FLUSH HI Window



The 58BW ST Flush window combines minimal sightlines of the ST system with all the best features of the tried and trusted 58BW range: advanced performance, versatility and security.

With a choice of three slim sashes and a range of configuration options, the flush finish and slimmer sightlines of the 58BW ST Flush make this the perfect choice for contemporary new-build and refurbishment projects.

A double rebate provides market-leading weather performance, even in more exposed locations, and the 58BW ST Flush utilises common hardware with the existing 58BW and Heritage ST window ranges to ensure it can withstand a range of weather conditions.

The 58BW ST Flush shares the same sashes, features and hardware with the 70mm frame option for the 58BW suite, making it quicker and easier to fabricate with just three new profiles.

DESIGN FEATURES

- › Advanced weather performance – features like the double rebate, and friction stays on side-hung windows offer protection against bad weather conditions
- › Slimmer sightlines – 45mm ultra-slim sash suits a range of property styles
- › Unique polyamide thermal break design to improve thermal performance
- › Certified under the Secured by Design scheme
- › Tested to PAS 24

OPTIONS

- › Open-out sashes including top and side-hung.
- › The flush shadow line can be complimented with a choice of flat, putty line or stepped edge Heritage vent styles to suit the property
- › Available in a range of standard and RAL colours.
- › Stock offer – readily available on a 5-day lead time in colours 9910HG, 7016M, and 9005M as well as dual colour white/grey and white/black.

SPECIFICATIONS

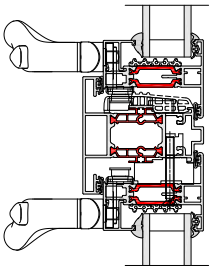
Performance and accreditations	58BW ST FLUSH HI
U-Value (Double Glazing)	1.4 W/m²K
U-Value (Triple Glazing)	1.0 W/m²K
Window Energy Rating (WER)	A - B
BRE Green Guide Rating	A rated
Air Permeability	Class 4 (600 Pa)
Water Tightness	Class EI500 (1500 Pa)
Wind Resistance	Class E2400 (2400 Pa)
Security	PAS 24
3rd Party Certification Q-Mark	✓
System	
Depth	58 & 70mm
Configurations	
Opening	Open-Out
Top hung	✓
Side hung	✓
Bottom hung	✓
Fixed light	✓
Multi-light	✓
French casement	✓
Size and weight limits	
Top Hung	
Max Size (mm)	1436w x1336h
Min. Size	386w x 336h
Max Weight	40kg
Side Hung	
Max Size (mm)	736w x 1436h
Min. Size	336w x 386h
Max Weight	24kg
Fixed Light	
Max Size (mm)	-
Min. Size	-
Max Weight	250kg
System Features	
Frame depth	58mm and 70mm
Dual colour option	✓
Multi-point locking	✓
Glazing options	Internal and external
Glazing thickness	24mm - 32mm
Sightline (Frame to Vent)	66mm
Sightline (Vent to Mullion)	81mm
Sightline (Fixed Light)	43mm

**Glazing thickness: Other thicknesses may be possible dependant on profile combinations specified.
Fabricators should refer to AluK technical manual glazing section for details.

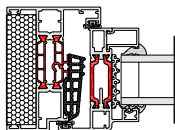
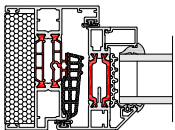
CAD CROSS SECTIONS AND THERMAL PROFILE

Additional details are available on request.

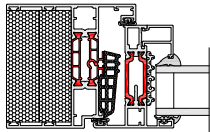
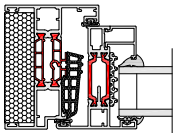
58BW ST FLUSH HI FRENCH CASEMENT



58BW ST FLUSH HI JAMB SECTION 1



58BW ST FLUSH HI JAMB SECTION 2



58BW ST HI THERMAL PROFILE

